



EASTBOURNE
COLLEGE



Spring programme
January–May
2022

ARTS

Spring arts programme January–May 2022

Welcome to the spring edition of the Eastbourne College arts programme.

Events are open to parents and public audiences and we warmly invite you to sample the wealth of artistic talent and professional expertise on show.

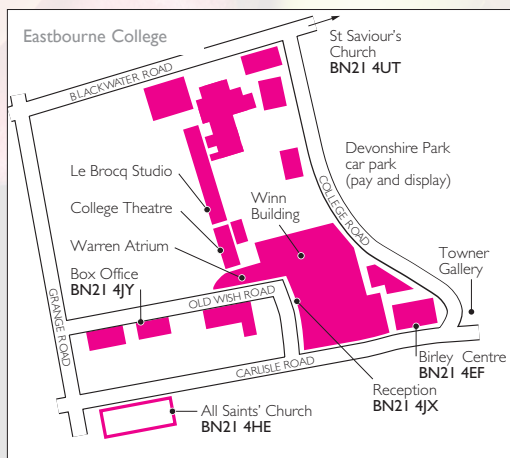
Booking Information

boxoffice@eastbourne-college.co.uk
www.wegotickets.com/eastbournecollege
01323 452255

The College regrets that it is unable to refund money or exchange tickets. Please be advised that there will be a charge of £1 to mail out tickets.

Occasionally details of events change after publication. Please check with box office.

Tickets are not available through the Eastbourne College Box Office for some events.



Eastbourne College presents

Informal Concerts



Tuesday 11 January

Tuesday 8 February

6.45–7.30pm

Birley Centre

Informal concerts provide a platform for pupils to demonstrate a variety of musical talent either as soloists or in ensembles. There is no entry charge and visitors are always welcome.

Occasionally an informal concert date is re-arranged so please contact the Music Department to check:
schu@eastbourne-college.co.uk

Eastbourne Symphony Orchestra
(42nd season) presents

34th Young Soloist Competition



Round One

Saturday 22 and Sunday 23 January, 2.00–6.00pm*

Final, Sunday 13 February, 2.00pm–6.00pm

Birley Centre

Established in 1988 as a result of the 11th Duke of Devonshire's generosity, this competition gives the winner the opportunity of performing a concerto with the ESO. In the first round, competitors present a 15-minute performance of a contrasting programme of their own choice. In the final, competitors present a 20-minute performance of two contrasting concerto movements.

An audience is welcome at both the first round (no advanced booking; £4 donation on the day; come and go as you wish between competitors) and the final (£10 entry on the door; refreshments provided while the judges decide).

More details from www.eso.org.uk or 07780 993801

*exact timings to be decided

Eastbourne College presents

The Birley Live Lounge



Tuesday 25 January
7.00–8.30pm

Birley Centre

The long-awaited Live Lounge returns, featuring members of the College's Singer Songwriter Club, performing an eclectic mix of fantastic original songs and popular covers.

FREE ENTRY

Eastbourne College presents

One Million Tiny Plays about Britain



Tuesday 1 February
6.45–7.30pm

Le Brocq Studio

A collection of very short satirical plays will be performed by our Years 9 and 10 drama scholars: a compendium of nearly one hundred very short playlets, some running to a good few minutes, others barely seconds long. A virtuoso showcase for our talented College actors who play all the parts, switching, in a heartbeat, ages, genders, social classes, and so on; each play a glimpse into ordinary British life.

FREE ENTRY

Gavin Robertson presents

The Ghost of a Smile



Tuesday 1 March
6.30–7.45pm

Le Brocq Studio

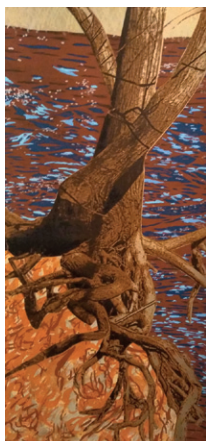
The Ghost of a Smile takes two ghost stories by Dickens and adapts them for the stage. The words are straight from the original stories but the process of adapting those for performance, with few props and no vast set, turns them into a storytelling theatrical experience. One performer plays several roles, and minimal subtle design and sound effects hint at different locations throughout the two stories with creepy, yet comic results.

Adapted / directed by Gavin Robertson
Performed by Nicholas Collett

Tickets £10 (free to Eastbourne College pupils)
01323 452255, boxoffice@eastbourne-college.co.uk
www.wegotickets.com
Refreshments available

Teri Walsh presents

Trees and Roots and Lines...



Trees and Roots XV (River Monnow, Skenfrith Castle)



Lines I (Cologne)

19 February–20 March

Saturday and Sundays only

11.00am–4.00pm

Private View Friday 18 February

6.00–8.00pm

Birley Centre

Teri's work is concerned with the core structure of things. Recently screenprinting has been dominant using stencils, drawings and photographs, sometimes incorporating woodcuts. The exhibition also features ceramic sculptures.

Natural and man-made themes are represented by two bodies of work: *Trees and Roots* and *Lines*. *Trees and Roots XV (River Monnow, Skenfrith Castle)* was chosen for the biennial Print International in Wrexham in 2019. *Lines I (Cologne)* has been chosen for the 2021 event.

FREE ENTRY

www.teriwalshartstuff.com

Eastbourne College presents

Piano Recital



Thursday 24 February
6.45–7.30pm

Birley Centre

An opportunity for a number of the College's many pianists to perform a variety of repertoire on the Steinway piano in the Jennifer Winn Auditorium.

Free entry

Eastbourne College presents

A Concert by Music Scholars



Tuesday 8 March

6.45–7.45pm

Birley Centre

A concert featuring some of the College's talented music scholars.

FREE ENTRY

ACE presents

Alexander Eadon Organ Recital



Tuesday 15 March
6.45–7.45pm

St Saviour's Church

Alexander Eadon started his musical career as a chorister in the world-renowned choir of King's College Cambridge. He trained as an organist at the Royal Academy of Music and, when not spending his time as assistant director of music at Eastbourne College, is also the assistant organist of Arundel Cathedral.

Lindy Dunbar presents

Movement and Rest



9 April–1 May

Saturdays and Sundays only

11.00am–4.00pm

Opening Reception Saturday 9 April

11.00am–2.00pm

Good Friday open; Easter Saturday open;

Easter Sunday closed; Easter Monday open

Birley Centre

Lindy returns to exhibit her spirited figurative drawings and paintings. Often drawn directly from dancers and acrobats, her work captures both the continual movement and the brief moments of rest. Alongside the drawings will be portraits, landscapes and interiors in a variety of media.

As well as being a local artist, Lindy is also a visiting tutor to the College. She exhibits at London Arts Fairs, Glyndebourne and many other venues, as well as selling prints of her work to John Lewis. Lindy's forthcoming exhibition includes a dual show in Sweden with her son Joseph Davey.

FREE ENTRY

www.lindydunbar.co.uk

Facebook: Lindy Dunbar

Eastbournian Society Chorus presents

Haydn's Creation



Eastbournian Society



Sunday 8 May

7.30pm

New singers are welcome.

Rehearsals in All Saints' Church except * in St Saviour's Church.

Sat 5 March (2.30–4.00pm)

Sat 19 March (2.30–4.00pm)

Thu 21 April (7.00–8.30pm)

Sat 30 April (2.30–4.00pm)*

Thu 5 May (7.00–8.30pm)

Sun 8 May (2.30–5.30pm*)

Haydn's Creation with the Eastbournian Society Chorus
and the Eastbourne Symphony Orchestra and Chorus.

More details jt@eastbourne-college.co.uk

07780 993801, www.eso.org.uk

Eastbourne College presents

Circus



Thursday 21 April–Sunday 24 April

Birley Centre

A four-day creative arts festival of events taking place across the College campus.

Circus will highlight our talented alumni and current pupils as they present a range of exciting performances and masterclasses. Save the dates 21–24 April 2022, full details in the next arts brochure.

All profits from this festival will go towards our transformational Arts Bursary – offering individuals a fair chance to succeed in the creative arts sector.

Paul Mayhew-Archer presents

Incurable Optimist



Thursday 21 April–Sunday 24 April

Birley Centre

Paul Mayhew-Archer will be performing his one-man show, *Incurable Optimist*.

Paul is a multi-award-winning writer whose credits include *The Vicar of Dibley*, *Mrs Brown's Boys* and the screen version of Roald Dahl's *Esio Trot* starring Judi Dench and Dustin Hoffman. He also produced the much loved Radio 4 shows *I'm Sorry I Haven't A Clue* and *Old Harry's Game*, and as a script editor he has worked on everything from *Spitting Image* to *Miranda*.

In 2011 he was diagnosed with Parkinson's. It's an incurable illness that gets progressively worse and has over 50 symptoms. It is also – as Paul quickly found out – funny.

Since then he's had some of the best times of his life.

“Very funny, and moving too” – Richard Curtis



Spring programme
January–May
2022