



Spring programme  
January–April  
2023

Spring programme  
January–April  
2023

# ARTS

Eastbourne College presents

## Spring arts programme January–May 2023

---

Welcome to the spring edition of the Eastbourne College arts programme.

Events are open to parents and public audiences and we warmly invite you to sample the wealth of artistic talent and professional expertise on show.

### Booking Information

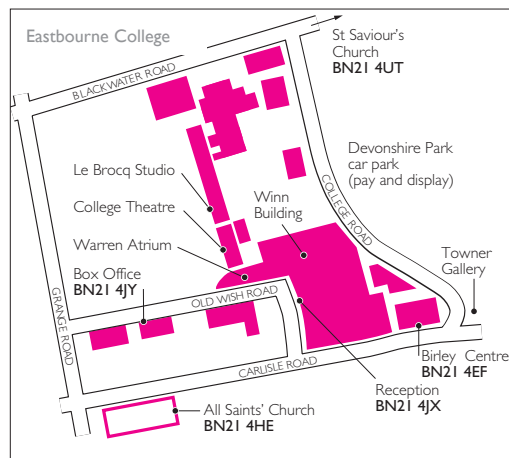
boxoffice@eastbourne-college.co.uk

www.wegotickets.com/eastbournecollege

01323 452255

Occasionally details of events change after publication. Please check with the box office.

Tickets are not available through the Eastbourne College Box Office for some events.



[www.eastbourne-college.co.uk](http://www.eastbourne-college.co.uk)

Eastbourne College presents

## Informal Concert Series

---



Tuesday 17 January and 31 January  
6.45pm–7.15pm

### Birley Centre

Informal concerts provide a platform for pupils to demonstrate a variety of musical talent either as soloist or in an ensemble. There is no entry charge and visitors are always welcome.

---

Free entry

Eastbourne College presents

## Piano Recital

---



**Tuesday 24 January**  
**6.45pm–7.30pm**

### Birley Centre

An opportunity for some of the College's many pianists to perform a variety of repertoire on the Steinway piano in the Jennifer Winn Auditorium. There is no entry charge and visitors are always welcome.

---

Free entry

Eastbourne College presents

## Music Scholars Concert

---



**Tuesday 21 February**  
**6.45pm–7.45pm**

### Birley Centre

A concert featuring some of the College's talented music scholars. There is no entry charge and visitors are always welcome.

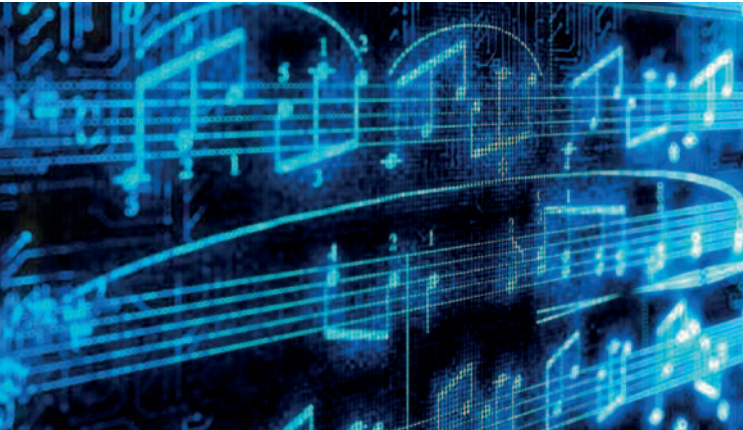
---

Free entry

Eastbourne College presents

## Composers Concert

---



Tuesday 7 March

6.45pm–7.45pm

Birley Centre

A chance to hear some of the exciting compositions produced by our GCSE and A-level musicians. There is no entry charge and visitors are always welcome.

---

Free entry

Goldmans Stage School presents

## Frozen

---



Thursday 16 February

7.00pm

Friday 17 February

11.00am and 2.30pm

Saturday 18 February

2.00pm and 5.30pm

Birley Centre

Do you wanna build a snowman?! Join Anna, Elsa, and all your favourite characters as they embark on an epic, ice-filled journey of self-discovery, camaraderie, and the real meaning of true love.

Adapted for young performers, this musical includes favourite *Frozen* songs such as 'Love Is an Open Door', 'Do You Want to Build a Snowman?' and 'Let It Go', as well as wonderful new songs from the Broadway and West End productions. With a shortened running time, plus an opportunity to meet the characters, this is a theatrical event for all ages.

---

Tickets £15 in advance: [www.goldmans.sumup.link](http://www.goldmans.sumup.link)  
This amateur production is presented by Music Theatre International. All authorised performance materials are also supplied by MTI. [www.mtishows.co.uk](http://www.mtishows.co.uk)

Eastbourne College presents

Rover College

An EBC TV Production

---



Thursday 2 February

7.15pm–7.45pm

College Theatre

**The Première**

Written, directed, and produced by Eastbourne College pupils, this is the première of episode one of a new fictional series drama set in a fictional college.

---

Free entry  
boxoffice@eastbourne-college.co.uk 01323 452255

Eastbourne College presents

Little Pieces of Gold

---



Tuesday 7 February

6.30pm–7.45pm

Le Brocq Studio

Our GCSE drama pupils have realised a selection of extracts from 19th and 20th-century plays as part of their course. From Oscar Wilde to Arthur Miller, these short pieces of gold will not disappoint.

---

Free entry  
boxoffice@eastbourne-college.co.uk 01323 452255

Eastbourne College presents

## Year 9 Scholars Play

Matchbox: ten short entertainments  
by Michael Frayn

---



Tuesday 28 February  
6.45pm–7.30pm

Le Brocq Studio

Our Year 9 scholars have been challenged to take on multiple roles in this compendium of short, satirical plays by master farceur, Michael Frayn.

---

Free entry  
boxoffice@eastbourne-college.co.uk 01323 452255

Eastbourne College presents

## Trombone Recital

---



Tuesday 28 February  
6.45pm–7.30pm

Birley Centre

Upper Sixth Music Scholar, Oliver Shouksmith, performs a selection of solo trombone repertoire including compositions by Bach, Morel and Rimsky-Korsakov.

---

Free entry  
boxoffice@eastbourne-college.co.uk 01323 452255

Life and Land:  
Drawings and paintings by  
Lindy Dunbar

---



Open every Saturday and Sunday in April  
11.00am–4.00pm  
Open Good Friday and Easter Monday, closed  
Easter Sunday  
Opening Reception  
Saturday 8 April 11.00am–1.00pm

### Birley Centre

Spirited figurative drawings and paintings are showing alongside colourful landscapes inspired by Sussex scenes in Lindy Dunbar's 2023 solo show. Across her figurative pieces, Lindy strives to capture the fresh energy of dancers and acrobats in movement. Her landscapes reflect a fascination with fleeting changes in light, weather and seasons. Lindy is a visiting tutor to Eastbourne College and local art groups. Her exhibitions have included London Art Fairs; Härke Konstcentrum, Sweden; Glyndebourne; John Lewis; Crypt Gallery, Seaford; and Star Brewery Gallery, Lewes.

---

Free entry  
[www.lindydunbar.co.uk](http://www.lindydunbar.co.uk)  
Instagram: @lindydunbar. Facebook: Lindy Dunbar

Eastbourne College presents  
A Glimpse of Truth

---



Tuesday 7 and Wednesday 8 March  
6.30pm–7.45pm

### Le Brocq Studio

Using the famed practice of Stanislavski to bring scenes vividly to life, our A-level drama pupils will take you on a tour of the modern British theatre. It will not disappoint.

---

Free entry  
[boxoffice@eastbourne-college.co.uk](mailto:boxoffice@eastbourne-college.co.uk) 01323 452255

DATES  
FOR YOUR DIARY

Eastbourne College presents  
A Little Night Music  
An Evening of Musical Theatre

---



Tuesday 16 May  
6.30pm–7.30pm  
College Theatre

In collaboration with the Music Department, Years 9, 10 and Lower Sixth scholars bring you a concert performance of all the favourites from *Matilda* to *Carousel*.

---

Free entry  
boxoffice@eastbourne-college.co.uk 01323 452255

DATES  
FOR YOUR DIARY

Eastbourne College presents  
The Dell Play: Macbeth by  
William Shakespeare

---



Wednesday 28–Friday 30 June  
8.15pm–9.15pm  
Dell Outdoor Theatre

'Screw thy courage to the sticking place and you will not fail.'  
Lower Sixth pupils bring you an abridged adaptation of one of the Bard's greatest, bloodiest tragedies. A famed tale of the perils of ambition.

---

Tickets £5 (free to Eastbourne College pupils)  
Bring a brolly  
www.wegottickets.com  
boxoffice@eastbourne-college.co.uk 01323 452255